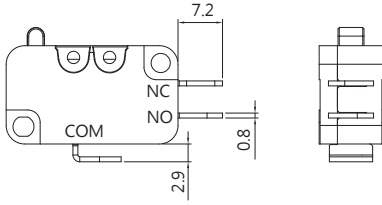


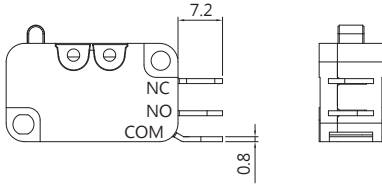


TERMINAL TYPES

A TYPE

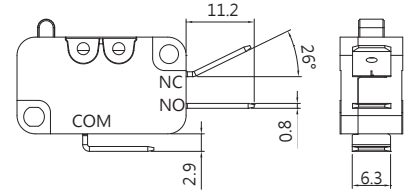


STANDARD

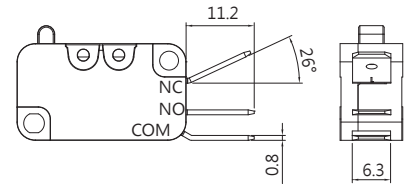


SIDE OUT

C TYPE  
250 terminal  
(6.3x0.8)

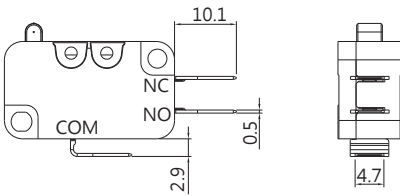


STANDARD

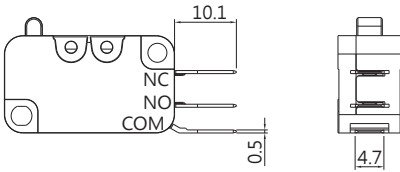


SIDE OUT

D TYPE  
187 terminal  
(4.7x0.5)

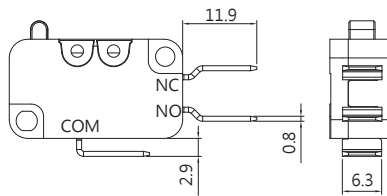


STANDARD



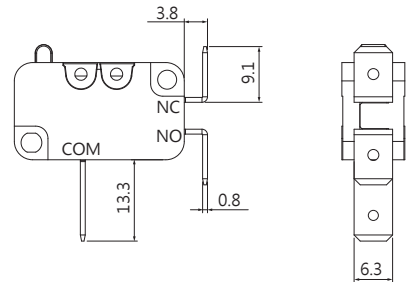
SIDE OUT

E TYPE  
250 terminal  
(6.3x0.8)



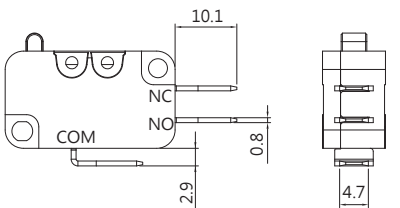
STANDARD

F TYPE  
250 terminal  
(6.3x0.8)



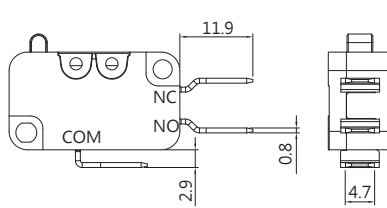
STANDARD

H TYPE  
187 terminal  
(4.7x0.8)

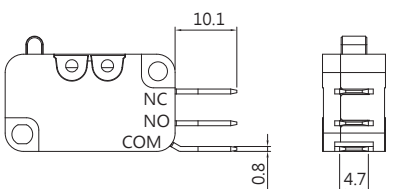


STANDARD

I TYPE  
187 terminal  
(4.7x0.8)



STANDARD



SIDE OUT

ORDERING INFORMATION

V	A	2	—	1	6	S		0		—	0	0	D		0	—	Z
SERIES PREFIX	C O D E	RATING CURRENT	C O D E	OPERATING FORCE	C O D E	EXTERIOR TYPE	C O D E	MOUNTING HOLES TYPE	C O D E	ACTUATOR TYPE	C O D E	TERMINAL TYPE	C O D E	CIRCUIT ARRANGEMENT	ROHS CODE		
	P1	0.1A 125/250VAC T125	Q	HEAVIER	0	 STANDARD TERMINAL NO ACTUATOR		 MOUNTING HOLES Ø3.1	00	No Lever	A	 STANDARD	E	0	S.P.D.T		
	03	3A 125/250VAC T125	H	HEAVY	1	 STANDARD TERMINAL ACTUATOR AWAY BUTTON		 MOUNTING HOLES Ø2.9	01			 STANDARD	1	S.P.S.T NO			
	06	6A 125/250VAC T125	S	STANDARD	2	 STANDARD TERMINAL ACTUATOR NEAR BUTTON			02			 STANDARD	2	S.P.S.T NC			
	10	10A 10(4)A 125/250VAC T125	L	LIGHT	3	 SIDE OUT TERMINAL NO ACTUATOR			03		C	 STANDARD					
	16	16A 16(4)A 125/250VAC T125	N	SLIGHT	4	 SIDE OUT TERMINAL ACTUATOR AWAY BUTTON			04			 STANDARD					
	20	20A 125/250VAC T125	D	LIGHTNESS	5	 SIDE OUT TERMINAL ACTUATOR NEAR BUTTON				...		 STANDARD					
	26	26A 125/250VAC T55	B	EXTREMELY LIGHTNESS													
	A03	3A 125/250VAC T85															
	A06	6A 125/250VAC T85															
	T6	6A 125/250VAC T200															

# NOTE		
ITEM	RATING CURRENT	OPERATING FORCE
1	Code:P1	ALL
2	Code:03	ALL
3	Code:06	D,N,L,S,H,Q
4	Code:10	L,S,H,Q
5	Code:16	L,S,H,Q
6	Code:20	S,H,Q
7	Code:26	Q
8	Code:A03	ALL
9	Code:A06	D,N,L,S,H,Q
10	Code:T6	S,H,Q

OPERATING CHARACTERISTICS

SWITCH TYPE	PART SUFFIX	OF Max. (gf)							OP (mm)	PT Max. (mm)	OT Min. (mm)	MD Max. (mm)
		B	D	N	L	S	H	Q				
VA2- □□□ 0-00D0-Z		18	45	75	110	170	230	330	14.7±0.5	1.72	0.8	0.4
VA2- □□□ 1-01D0-Z		18	45	75	110	170	230	330	15.3±0.5	2.8	0.6	0.5
VA2- □□□ 2-01D0-Z		8	27	43	50	85	120	175	15.3±1.1	5.2	1.55	0.9
VA2- □□□ 1-02D0-Z		8	22	37	50	86	125	180	15.3±1.5	5.9	1.6	1.0
VA2- □□□ 2-02D0-Z		5	16	25	30	51	65	90	15.3±2.3	9.7	3.1	2.2
VA2- □□□ 1-03D0-Z		6	13	25	30	49	70	120	15.3±2.5	9.3	-	2.1
VA2- □□□ 2-03D0-Z		4	8	15	20	30	35	50	15.3±4.3	16.2	-	3.5
VA2- □□□ 1-04D0-Z		10	28	43	65	110	140	205	18.7±1.5	5.5	1.4	1.1
VA2- □□□ 2-04D0-Z		7	16	24	35	56	70	100	18.7±2.1	8.7	3.2	1.7
VA2- □□□ 1-05D0-Z		20	55	80	110	170	230	330	20.7±0.8	2.7	0.6	0.45
VA2- □□□ 2-05D0-Z		8	35	55	70	100	120	175	20.7±1.1	4.65	1.4	0.8
VA2- □□□ 1-06D0-Z		8	30	45	65	100	125	180	20.7±1.5	4.2	1.6	1.25
VA2- □□□ 2-06D0-Z		7	20	30	40	51	65	90	20.7±2.2	9.3	2.8	1.8