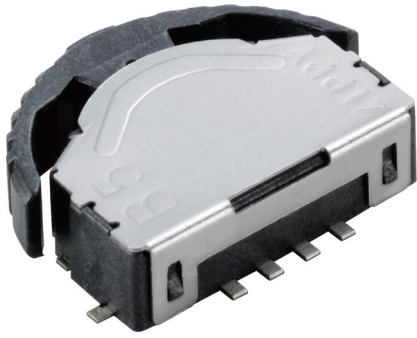


SLIDE SWITCHES



B5 SERIES

SPECIFICATIONS

Contact Resistance(initial)

Max. 500 mΩ

Measured by ohm meter - open voltage < 1VDC, driver current -100 mA

Insulation Resistance(at 100 VDC / minute)

Min. 100 MΩ

Operating Temperature Range

-10°C to 60°C (with no icing)

Vibration

10~55Hz, displacement 0.75mm(p-p)

Electrical Service Life

Min. 100,000 operations

Electrical Operating Frequency

20 operations per minute

RATING

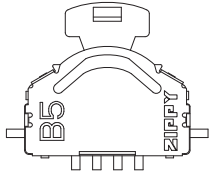
10mA, 5VDC

APPLICATIONS

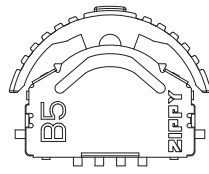
PDA, MP3 player, Mobile phone

ACTUATOR TYPES

A1 TYPE



P5 TYPE

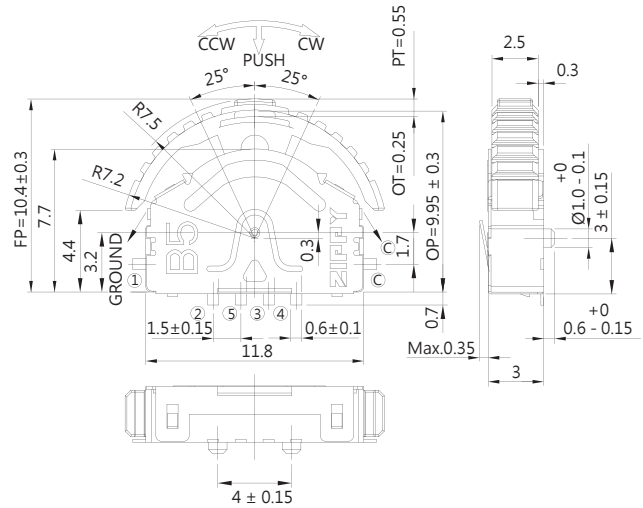


ORDERING INFORMATION

B	5	—	P	5	—	S	—	0	—	D	—	Z
SERIES PREFIX	ACTUATOR TYPE		OPERATING FORCE		FEELING TYPE	TERMINAL TYPE		ROHS CODE				
	P5	STANDARD	L	150±80gf		0	CLICK	D	SMT TERMINAL SP5T			
A1	CHANGE ACTUATOR	S	200±100gf	1	NON CLICK	F	SMT TERMINAL SP3T					
		H	250±100gf									
		Q	300±150gf									

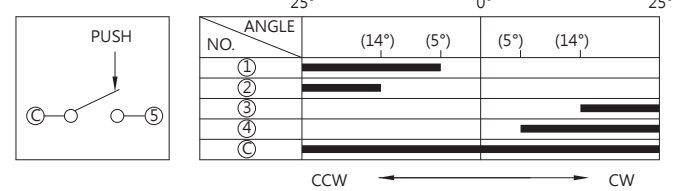
DIMENSIONS

Unless otherwise specified, a tolerance of ±0.4mm applies to all dimensions.

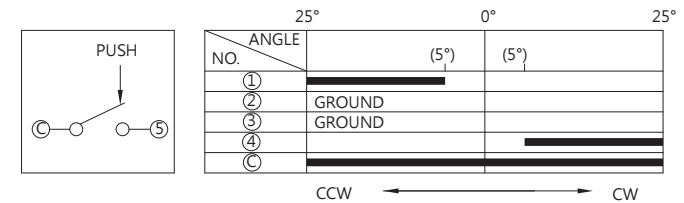


CONTACT CONFIGURATION

D TYPE

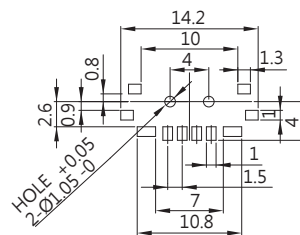


F TYPE



MOUNTING HOLES

D TYPE



F TYPE

