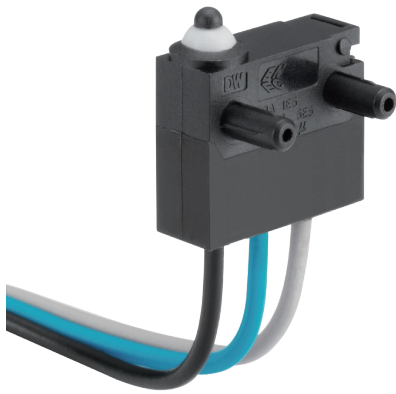


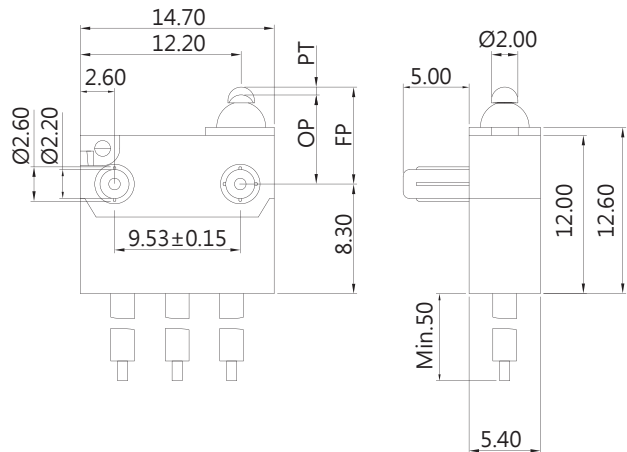
# WATER PROOF SWITCHES



## DW (IP67)SERIES

### DIMENSIONS

Unless otherwise specified, a tolerance of  $\pm 0.4\text{mm}$  applies to all dimensions.



### APPLICATIONS

Automotive (Seat Belt, Door Latch, Engine Hood, Door Trunk), Air Conditioner, Communication, Security System, Electric Tooth Brush, Toy

### CERTIFICATE INFORMATION

Model Name	UL, cUL	ENEC
DW-N2S	10 mA 12 VDC (Temp : 65°C) Min. 10,000 operations	10mA 12VDC, $\mu$ T55 5E5
DW-N3S	3 A 12 VDC (Temp:65°C) Min. 100,000 operations 3A 125 VAC (Temp:65°C) Min. 6,000 operations	3A 12VDC, $\mu$ T55 1E5

### ORDERING INFORMATION

D	W	N	2	S	0	1	A	0	E	A	0	0	1	A	Z	
SERIES PREFIX	CODE	RATING CURRENT	CODE	OPERATING FORCE	CODE	ACTUATOR TYPE	CODE	PILLAR & TRAVEL TYPE	CODE	CIRCUIT ARRANGEMENT	CODE	AWG TYPE	CODE	UL NUMBER	SERIAL CODE	ROHS CODE
		10mA 12VDC Contact Plated Gold and Terminal Plated Sliver	N2	S STANDARD	00		A		0	S.P.D.T	E	20	A	UL 1007		
		3A 12VDC	N3		01		B		1	S.P.S.T.NO	F	22	C	UL 1430		
					04		C		2	S.P.S.T.NC	G	24	D	UL 1061		
							G									
							I									
							K									
							M									
							P									
							R									
							D									
							E									
							F									
							H									
							J									
							L									
							N									
							Q									
							S									

**DIMENSIONS**

CODE	L1	H	ØA	ØB	ØC	ØD	P
A	2.0	3.7	2.2	2.6	2.2	2.6	9.53
B	3.5	3.7	2.2	2.6	2.2	2.6	9.53
C	2.8	3.75	2.7	3.1 (THREE PINS)	2.2	2.6	9.53
D	4.0	3.7	2.2	2.6	2.2	2.6	9.53
E	0.9	3.7	2.2	N/A	2.2	N/A	9.53
F	1.8	3.7	2.5	N/A	2.5	N/A	9.53
G	5.0	3.7	2.4	2.8	2.4	2.8	8.0