

## FEATURES特点

- Contact rated load up to 80A/14VDC.  
接点额定负载可达到80安培/直流14伏特。
- Contact arrangement 1Form A, 1Form C available.  
接点形式为1组常开, 及1组转换. 供您选择。
- Quick connect or P.C.B. terminals.  
有快接端子及电路板端子两种供选择。



用途：适用于电动车、汽车充电逆变器上使用。

## CONTACT RATING 接点参数

Contact Form 接点形式	1A SPST-NO	1C SPDT
Rating Load(Resistive)额定负载(阻性)	80A/14VDC	NO:80A/14VDC NC:60A/14VDC
Max. Switching Power最大切换功率	1120W	
Max. Switching Voltage最大切换电压	14VDC	
Max. Switching Current最大切换电流	80A	
Min. Switching Current/Voltage 最小切换电流/电压	100mA 5VDC	
Contact Rating Current接点负载电流	80A	NO/NC : 80A / 60A
Contact Material接点材质	Ag Alloy银合金	

## CHARACTERISTICS 性能参数

Electrical Life 电气寿命	1 × 10 <sup>5</sup>	
Mechanical Life机械寿命	1 × 10 <sup>7</sup>	
Insulation Resistance绝缘阻抗	Min. 100MΩ 500VDC	
Contact Resistance(Initial)接点电阻	≤100mΩ	
Operate Time 动作时间	≤7ms	
Release Time 开放时间	≤5ms	
Initial Dielectric Strength 耐压	between open contacts开放接点间: 50/60Hz 500VAC 1min. between contacts and coil线圈接点间: 50/60Hz 500VAC 1min.	
Vibration Resistance 耐振动	Malfunction: 误动作:	10 ~ 40Hz Double Amplitude双振幅1.5mm
	Damage limits: 耐久:	10 ~ 40Hz Double Amplitude双振幅1.5mm
Shock Resistance 耐冲击	Malfunction: 误动作:	10G
	Damage limits: 耐久:	100G
Ambient Temperature环境温度	-40℃ ~ +85℃ (No freezing 无结冰)	
Relative Humidity相对湿度	85% at 40℃	
Unit Weight单位重量	约Approx. 37g	

## ORDERING INFORMATION型号代码说明

Y16- 1A - 12 D P M  
 1 2 3 4 5 6

<p>1. Model Number 型号</p> <p>2. Contact Arrangement 接点形式          1A = 1 Form A 1组常开          1C = 1 Form C 1组转换</p> <p>3. Coil Voltage 线圈电压          6 - 24VDC</p>	<p>4. Coil Type 线圈形式          D=DC 直流</p> <p>5. Terminal Type 端子形式          Nil=Plug in Type 插入型          P=P.C.B. Terminal Type 电路板端子型</p> <p>6. Dust Cover Type 防尘外盖形式          Nil= Standard Dust Cover 标准防尘外盖          M = Mounting Bracket Dust Cover 有靠背防尘外盖</p>
---	--

## COIL RATINGS (at 20°C) 线圈额定值 (在20°C)

COIL TYPE 线圈形式	Coil Nominal Voltage 线圈额定电压 (V)	Coil Resistance 线圈阻抗 ( $\Omega \pm 10\%$ )	Pick-Up Voltage 动作电压(V) (Max)	Drop-Out Voltage 开放电压(V) (Min)	Nominal Current 额定电流 (mA)
DC Standard Coil 直流标准线圈 (abt. 2.0W)	6	18	3.6	0.6	333
	12	72	7.2	1.2	167
	24	288	14.4	2.4	83

\* Max Continuous Voltage at 20°C: 110% of Coil Normal Voltage.  
 最大使用电压在20°C:线圈额定电压的110%

## OUTLINE DIMENSIONS 外部尺寸

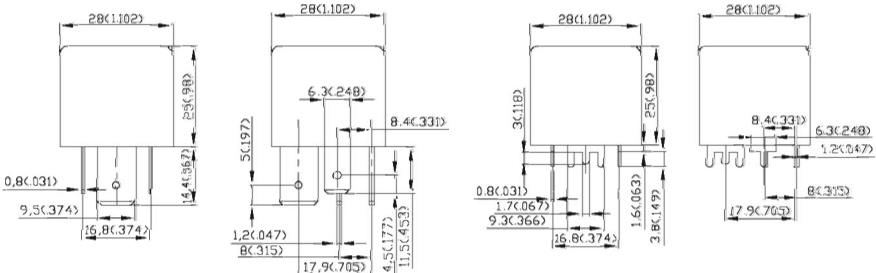
UNIT: mm(inch) 单位: 毫米(英寸)

### Standard Dust Cover标准防尘外盖

### Dimensions尺寸

#### Plug in Type 插入型

#### P.C.B. Type 电路板端子型

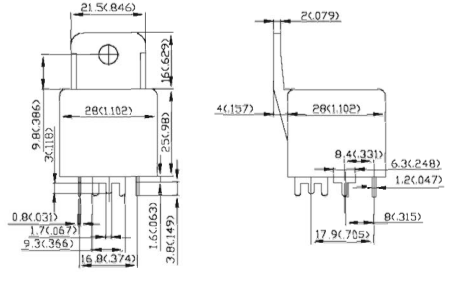
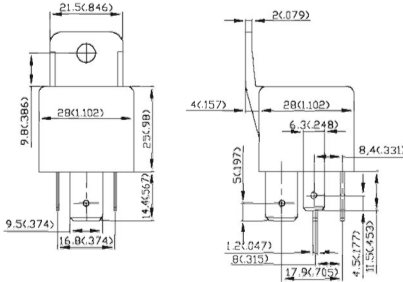


REMARK: Dimensions  $\leq 5\text{mm} \pm 0.2\text{mm}$ ,  $> 5\text{mm} \pm 0.3\text{mm}$ , the tolerance of PCB thru hole:  $+0.2\text{mm}$   
 备注: 尺寸公差  $\leq 5\text{mm} \pm 0.2\text{mm}$ ,  $> 5\text{mm} \pm 0.3\text{mm}$ , 印刷电路板孔 $+0.2\text{mm}$

## Mounting Bracket Dust Cover 有盖防尘罩

### Plug in Type 插入型

### P.C.B. Type 电路板端子型



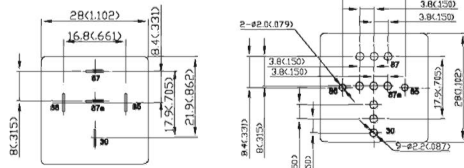
### Internal Connections 接线图 (Bottom View 底视图)

### Drilling Plan 孔位图 (Bottom View 底视图)



1C

1A



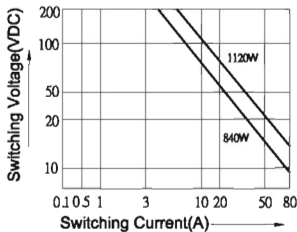
Plug in Type

P.C.B. Type

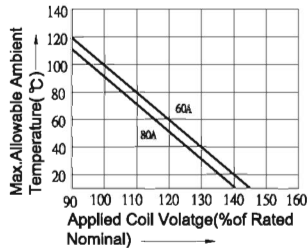
REMARK: Dimensions  $\leq 5\text{mm} \pm 0.2\text{mm}$ ,  $> 5\text{mm} \pm 0.3\text{mm}$ , the tolerance of PCB thru hole:  $+0.2\text{mm}$   
备注: 尺寸公差  $\leq 5\text{mm} \pm 0.2\text{mm}$ ,  $> 5\text{mm} \pm 0.3\text{mm}$ , 印刷电路板孔  $+0.2\text{mm}$

## Y16 Reference Data 参考资料

### Limiting Curve For Power Load



### Ambient Temperature Versus Coil Voltage God Continuous Duty



Assumptions: 1. Thermal resistance =  $45^\circ$  per watt  
2. Nominal coil resistance  
3. Curves are based on 1.6watts at  $20^\circ\text{C}$