

FEATURES特点

- UL safety approval.
UL安规认证
- Standard type & High sensitivity type available.
包括标准型及高感度型
- DIL pitch terminal.
DIL 型端子
- Miniature Type which saved the P.C. board's layout space.
轻巧外型, 适用于较小电路板设计尺寸空间
- Nominal power 150mW to 510mW.
功率分为 150mW到510mW



UL FILE NO.: E162117

用途举例: 电话机、Modem、传真、防灾防盗报警器、通信设备、办公设备、教学试听设备、医疗设备、仪器仪表、安全警报、探测器。

CONTACT RATING 接点参数

Contact Form接点形式	2C DPDT
Max. Switching Power最大切换功率	125VA 60W
Max. Switching Voltage最大切换电压	125VAC 30VDC
Max. Switching Current最大切换电流	2A
Min. Switching Current最小切换电流	1mA 100mV
Rating Load(Resistive)额定负载(阻性)	1A 125VAC 2A 30VDC
Contact Material 接点材质	Ag Alloy 银合金

CHARACTERISTICS 性能参数

Electrical Life 电气寿命	2 x 10 ⁵	
Mechanical Life机械寿命	2 x 10 ⁷	
Insulation Resistance绝缘阻抗	Min. 1000MΩ 500VDC	
Contact Resistance(Initial)接点电阻	≤50mΩ Max. Standard type & high sensitivity 标准型及高感度型 ≤100mΩ Max.(only for 150mW专指150mW产品)	
Operate Time 动作时间	≤6ms	
Release Time 开放时间	≤3ms	
Initial Dielectric Strength 耐压	between open contacts 开放接点间: 50/60Hz 500VAC 1min. between contacts and coi 接点线圈间: 50/60Hz 1000VAC 1min between contacts sets 接点组间: 50/60Hz 1000VAC 1min.	
Vibration Resistance 耐振动	Malfunction: 误动作:	10 ~ 55Hz Double Amplitude双振幅 1.5mm
	Damage limits: 耐久:	10 ~ 55Hz Double Amplitude双振幅 1.5mm
Shock Resistance 耐冲击	Malfunction: 误动作:	10G
	Damage limits: 耐久:	100G
Ambient Temperature环境温度	-30°C ~ +70°C (No freezing 无结冰)	
Relative Humidity相对湿度	85% at 40°C	
Unit Weight单位重量	Approx. 5g	



941系列继电器SERIES RELAY

ORDERING INFORMATION 型号代码说明

941 H - 2C - 12 D 150 1 2 3 4 5 6	
1. Model Number 型号 2. Coil Sensitivity 线圈感度 Nil = Standard Type 标准型 H = High Sensitive Type 高感度型 3. Contact Arrangement 接点形式 2C = 2 Form C 2组转换	4. Coil Voltage 线圈电压 5 ~ 48V 5. Coil Type 线圈形式 D = DC 直流 6. Nominal Power 额定功率 150mW ~ 510mW

COIL RATINGS (at 20°C) 线圈额定值 (在20°C)

COIL TYPE 线圈形式	Coil Nominal Voltage 线圈额定电压 (V)	Coil Resistance 线圈阻抗 ($\Omega \pm 10\%$)	Pick-Up Voltage 动作电压(V) (Max)	Drop-Out Voltage 开放电压(V) (Min)	Nominal Current 额定电流 (mA)	Nominal Power 额定功率 (mW)	
DC High Sensitive Coils 直流高感度型线圈	5	167	3.75	0.25	30.3	150	
	6	240	4.5	0.3	25		
	12	960	9	0.6	12.5		
	24	3840	18	1.2	6.3		
	DC Standard Coils 直流标准型线圈	5	125	3.75	0.25	40	200
		6	180	4.5	0.3	33.3	
		9	405	6.75	0.45	22.2	
		12	720	9	0.6	16.7	
DC Standard Coils 直流标准型线圈		24	2880	18	1.2	8.3	360
		5	70	3.75	0.25	71.4	
		6	100	4.5	0.3	60	
		12	400	9	0.6	30	
	DC Standard Coils 直流标准型线圈	24	1600	18	1.2	15	510
		5	49	3.75	0.25	102.0	
		6	70.6	4.5	0.3	85.0	
		12	282.4	9	0.6	42.5	
DC Standard Coils 直流标准型线圈	24	1129.4	18	1.2	21.3	510	
	48	4517.6	36	2.4	10.6		

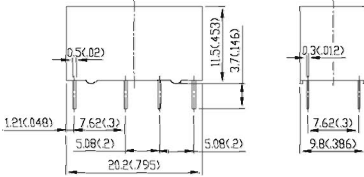
* Max Continuous Voltage at 20°C: 130% of Coil Normal Voltage.

最大使用电压在20°C:线圈额定电压的130%。

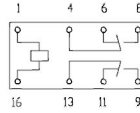
OUTLINE DIMENSIONS 外部尺寸

UNIT: mm(inch) 单位: 毫米(英寸)

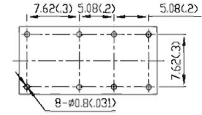
Dimensions尺寸



Internal Connections接线图
(Bottom View底视图)

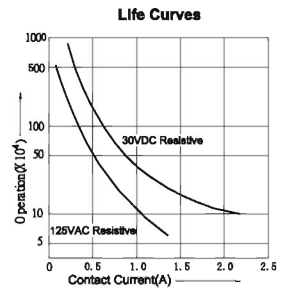
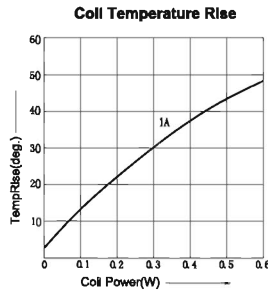
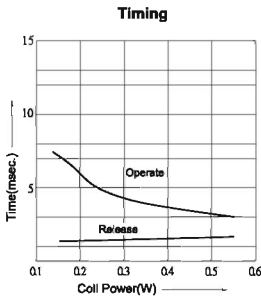


Drilling Plan孔位图
(Bottom View底视图)



REMARK: Dimensions $\leq 5\text{mm} \pm 0.2\text{mm}$, $> 5\text{mm} \pm 0.3\text{mm}$, the tolerance of PCB thru hole: $+0.2\text{mm}$
备注: 尺寸公差 $\leq 5\text{mm} \pm 0.2\text{mm}$, $> 5\text{mm} \pm 0.3\text{mm}$, 印刷电路板孔 $+0.2\text{mm}$

941 Reference Data 参考资料



SAFETY STANDARD 安规认证

SAFETY 安规名称	Coil Voltage 线圈电压	Contact Rated 接点额定值
UL	DC:3 ~ 48V	1A 125VAC 2A 30VDC